



# TINKER & RASOR

CORROSION MITIGATION INSTRUMENTATION

## PRODUCT DATA SHEET

### MODEL DB-A

**Features:**

- Rugged body
- Large copper-sulfate surface area
- Long life (10+ years)

**Construction:**

Tough PVC/ABS body with proprietary solid copper-sulfate mixture, and pure copper rod.

**Applications:**

Under ground without chloride (<500 PPM) or fresh water or sea water contamination.

**Recommendations:**

Best Results with rapid wetting backfill, such as bentonite to ensure a moist environment for the reference electrode.

**Environment:**

Low Freezing Point and high boiling point makes rugged product in most environments.

**Specifications:**

Copper-Copper/Sulfate reference electrode.

**Tip:**

Proprietary, non-tip electrode, with direct exposure of copper sulfate mixture to backfill/soil.

**Dimensions:**

2.875" diameter, 4.88" long

Approximate weight 1.5 lbs (0.700 Kgs)

WIRE AND EPOXY NOT INCLUDED

### MODEL SC-4

**Features:**

- (2) Body types for use on LAND and SEA
- Waterproof connector
- Pure silver element
- Carrying case

**Construction:**

Strong plastic body, with a brass weight for SEA use. Waterproof connector with stainless steel wire strain relief, for pulling cell up from great depths.

**Applications:**

- Offshore structures
- Land based structures

**Specifications:**

- Silver-Silver/Chloride reference electrode (AgAg/Cl)
- 99.99% Pure Silver

**Dimensions:**

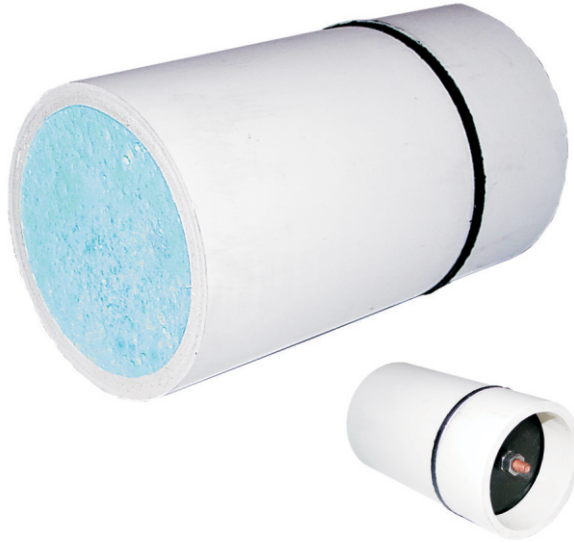
KIT: 12" x 6.75" x 4.5", 2 lbs.

(305mm x 171mm x 114mm, 0.908Kg)

SHIPPING: 13" x 7.5" x 5", 4 lbs.

(330mm x 191mm x 127mm, 1.81Kg)

#### Direct Burial Reference Electrode



#### MODEL SC-4 AgAg/Cl kit

DELIVERY: **Immediately from STOCK**  
F.O.B. San Bernardino, CA USA

SERVICE: **24-hour Turn-Around**

TERMS: **Net30 Days**, on approval of credit

WARRANTY: **90 Days**, parts and labor